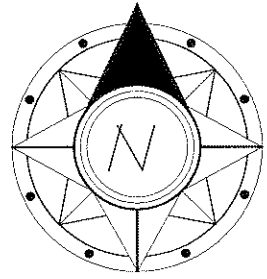


# LOT 41R - CALI WOODS SUBDIVISION

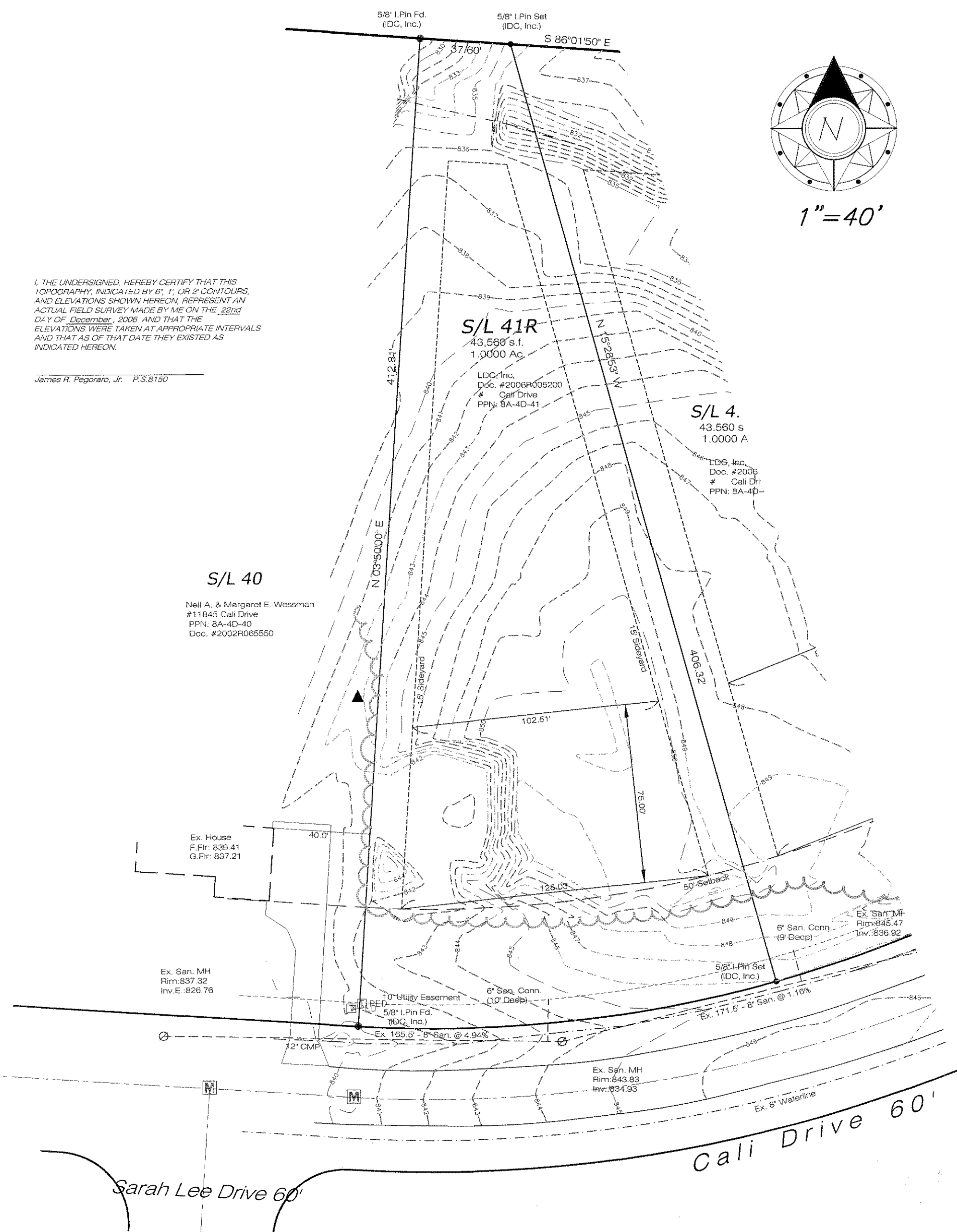
Concord Twp. Trustees  
PPN: 8A-5D-01-33



1"=40'

I, THE UNDERSIGNED, HEREBY CERTIFY THAT THIS TOPOGRAPHY, INDICATED BY 6', 1', OR 2' CONTOURS, AND ELEVATIONS SHOWN HEREON, REPRESENT AN ACTUAL FIELD SURVEY MADE BY ME ON THE 22nd DAY OF December, 2006 AND THAT THE ELEVATIONS WERE TAKEN AT APPROPRIATE INTERVALS AND THAT AS OF THAT DATE THEY EXISTED AS INDICATED HEREON.

James R. Pegoraro, Jr. P.S. 8150



S/L 40

Neil A. & Margaret E. Wessman  
#11845 Cali Drive  
PPN: 8A-4D-40  
Doc. #2002R065550

S/L 41R  
43,560 s.f.  
1.0000 Ac

LDC, Inc.  
Doc. #2006R005200  
# Cali Drive  
PPN: 8A-4D-41

S/L 4.  
43,560 s  
1.0000 A

LDC, Inc.  
Doc. #2006  
# Cali Dr  
PPN: 8A-4D-

Sarah Lee Drive 60'

Cali Drive 60'

PREPARED BY:

L.D.C. Inc. d.b.a.  **LAND DESIGN consultants**  
www.LDCinc.net  
ENGINEERS · PLANNERS SURVEYORS  
8585 East Avenue Mentor, Ohio 44060 1471 Lear Industrial Park Avon, Ohio 44011  
TEL: (440) 255-8463 (440) 951-LANDTEL: (440) 937-5601 (440) 937-5602  
(440) 354-6938 FAX: (440) 255-9575 AX: (440) 937-5603